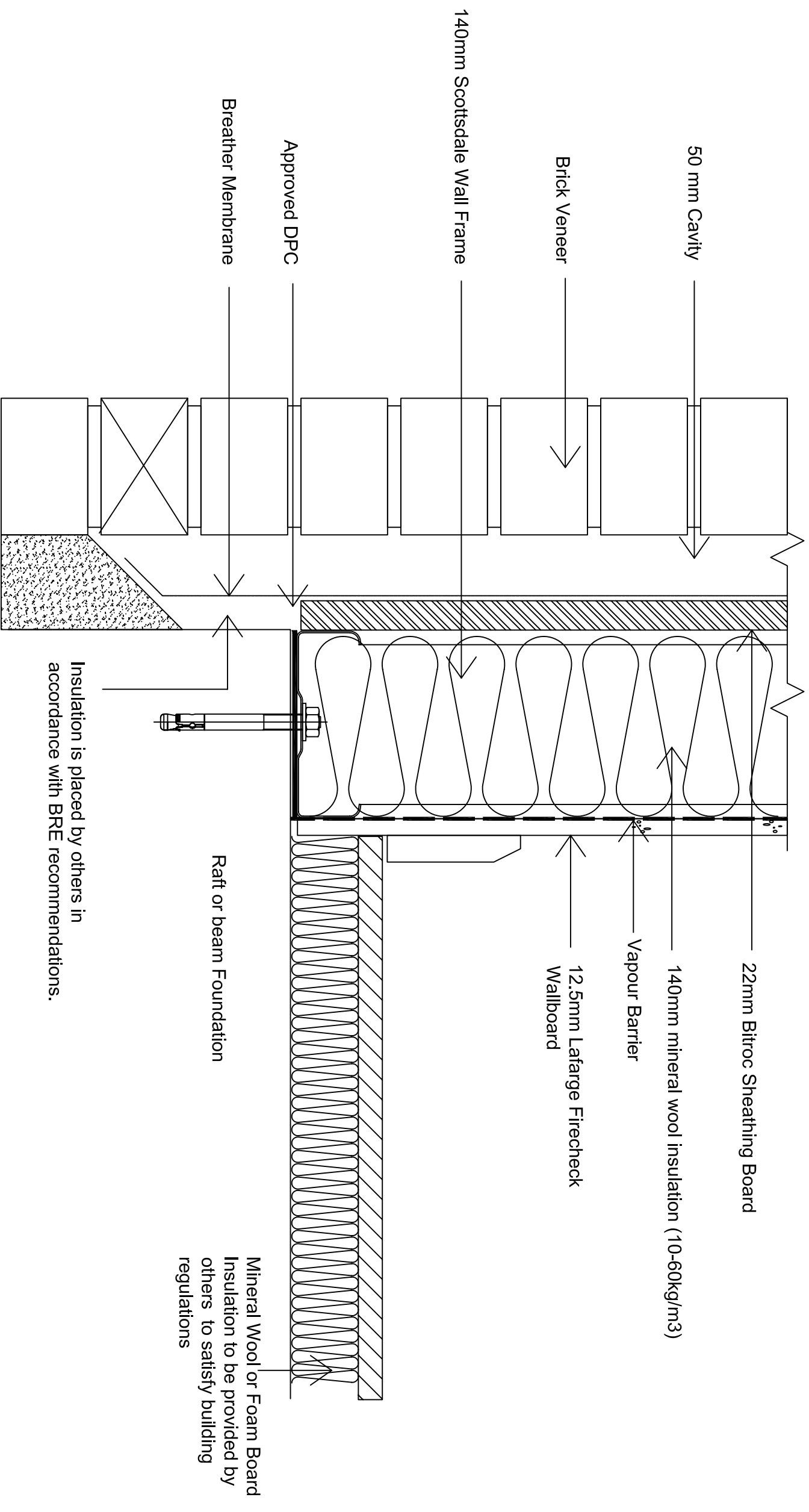


The configuration shown achieves better than 0.35 W/m<sup>2</sup>K, calculated according to BRE Digest 465. Refer to IS209 for U value and Dew point calculation reports.



**NOTES**

IMPORTANT: ALL COPYRIGHT AND DESIGN RIGHT, SUBSISTING IN THIS DOCUMENT IS THE PROPERTY OF SCOTSDALE CONSTRUCTION SYSTEMS AND ASSOCIATED COMPANIES AND MAY NOT BE REPRODUCED WITHOUT WRITTEN CONSENT. THIS DOCUMENT AND THE INFORMATION CONTAINED WITHIN IT IS CONFIDENTIAL TO SCOTSDALE CONSTRUCTION SYSTEMS AND ASSOCIATED COMPANIES AND MAY NOT BE DISCLOSED TO ANY THIRD PARTY WITHOUT WRITTEN CONSENT.

**REVISIONS**

UNLESS OTHERWISE STATED ALL DIMENSIONS ARE IN MILLIMETRES

**DO NOT SCALE**

**IF IN DOUBT ASK!**

PROJECT NAME 2 Storey Model House Construction Details

CUSTOMER NAME Scottsdale Steel UK Ltd

DRAWING TITLE Wall & Floor Junction Section at Base - 140mm stud option

SCALE N.T.S. DRAWN BY Bob Colver

STATUS DATE 10-05-06

Scottsdale Steel UK Ltd  
500 Chiswick High Road, London W4 5RG

**Scottsdale**  
Scottsdale Construction Systems

DRAWING No. BRE/A21/201

CHECKED BY - Serdar Dunder

REVISION -

