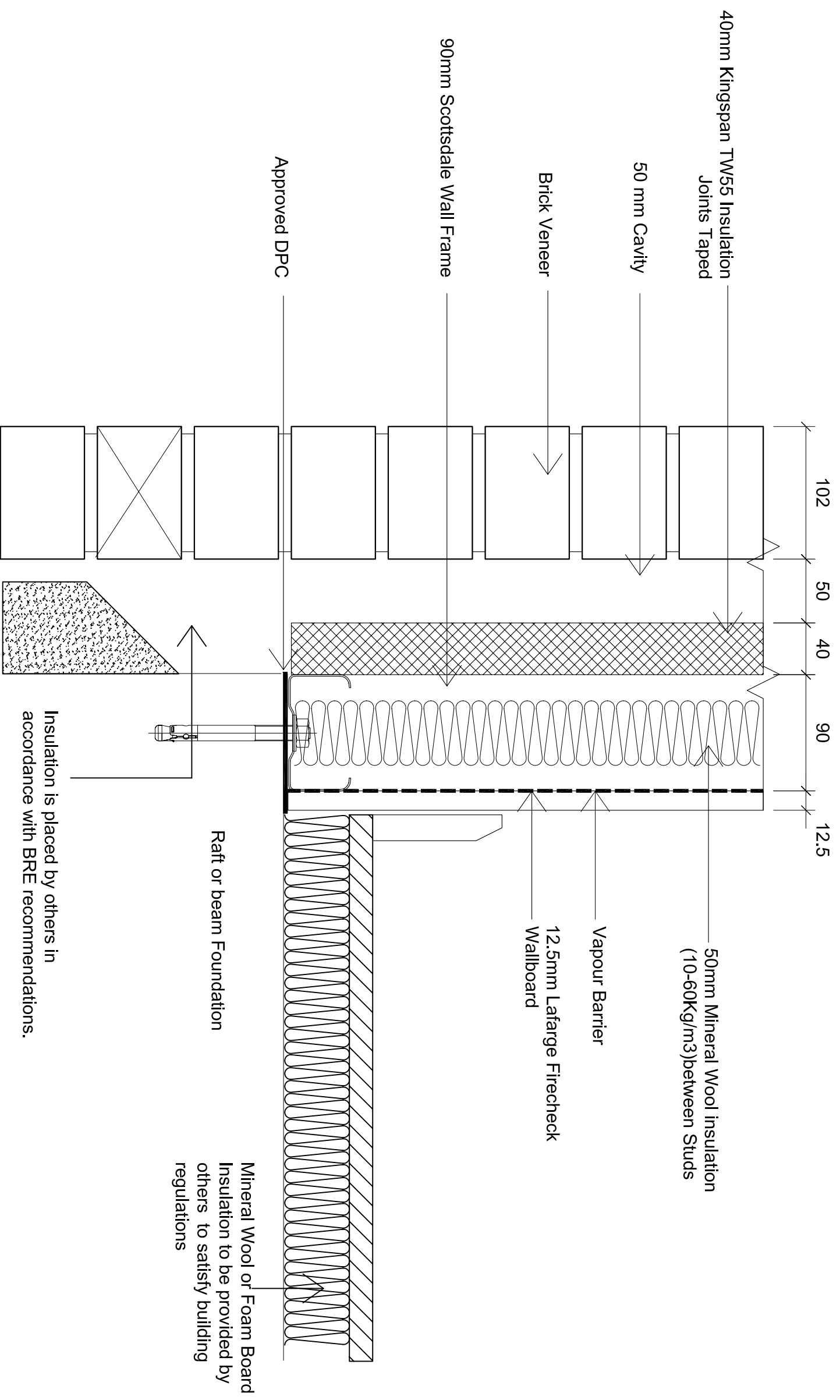


The configuration shown achieves better than 0.35 W/m²K, calculated according to BRE Digest 465. Refer to IS210 for U value and Dew point calculation reports.



NOTES

IMPORTANT: ALL COPYRIGHT AND DESIGN RIGHT, SUBSISTING IN THIS DOCUMENT IS THE PROPERTY OF SCOTSDALE CONSTRUCTION SYSTEMS AND ASSOCIATED COMPANIES AND MAY NOT BE REPRODUCED WITHOUT WRITTEN CONSENT. THIS DOCUMENT AND THE INFORMATION CONTAINED WITHIN IT, IS CONFIDENTIAL TO SCOTSDALE CONSTRUCTION SYSTEMS AND ASSOCIATED COMPANIES AND MAY NOT BE DISCLOSED TO ANY THIRD PARTY WITHOUT WRITTEN CONSENT.

REVISIONS

UNLESS OTHERWISE STATED ALL DIMENSIONS ARE IN MILLIMETRES

DO NOT SCALE
IF IN DOUBT ASK!

PROJECT NAME	2 Storey Model House Construction Details	DRAWING No.	BRE/A21/205
CUSTOMER NAME	Scottsdale Steel UK Ltd	CHECKED BY -	Serdar Dundar
DRAWING TITLE	Wall Section at Base - 90mm stud option	REVISION	-
SCALE	N.T.S.	DRAWN BY	Bob Colver
STATUS	Scottsdale Steel UK Ltd 500 Chiswick High Road, London W4 5RG	DATE	10-05-06