



Mineral Wool Insulation (10-60kg/m³)
 Only required when additional insulation
 and acoustic performance is required;
 i.e. partition between bathroom & lounge...

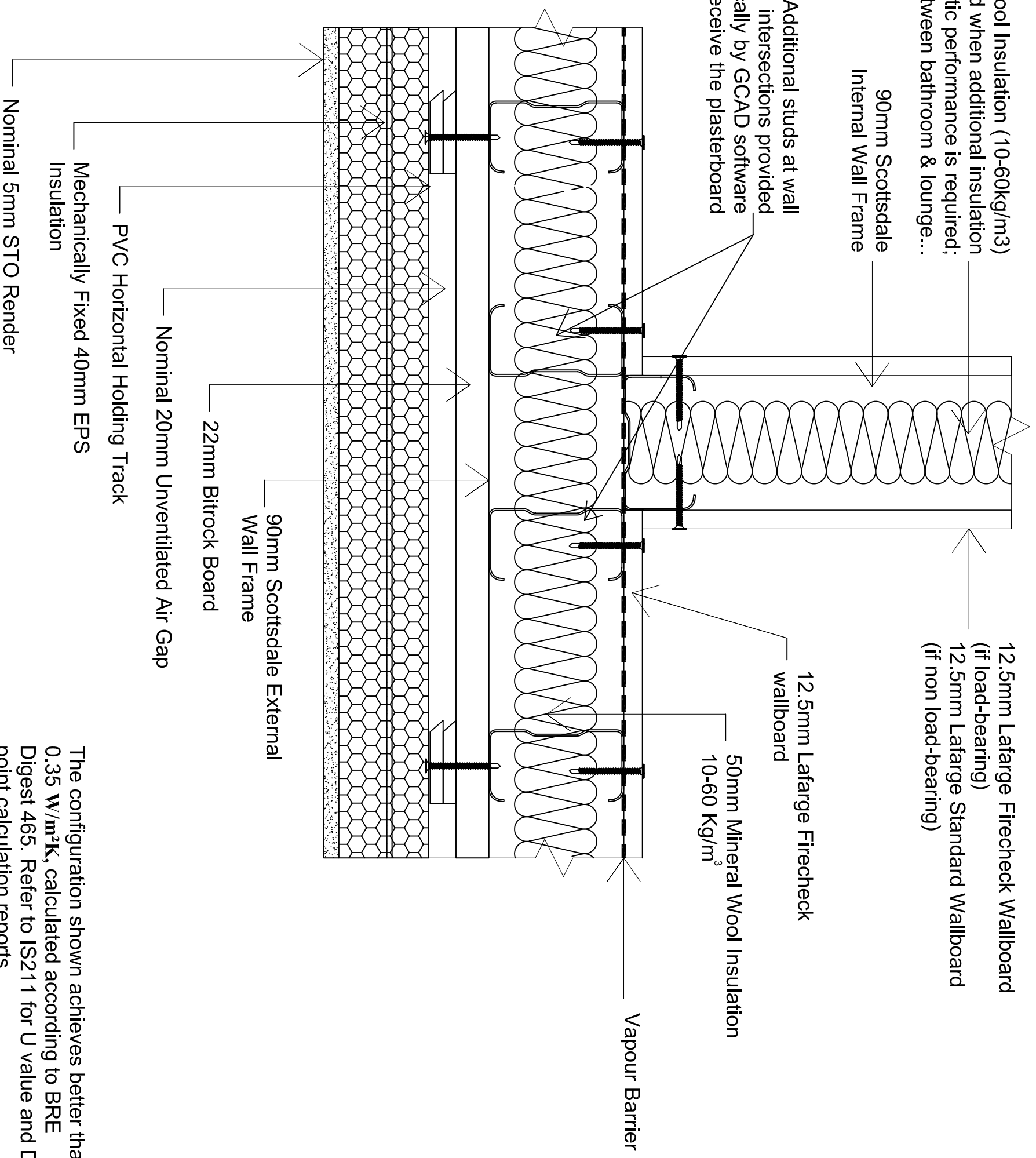
12.5mm Lafarge Firecheck Wallboard
 (if load-bearing)
 12.5mm Lafarge Standard Wallboard
 (if non load-bearing)

Additional studs at wall
 intersections provided
 automatically by GCAD software
 to receive the plasterboard

12.5mm Lafarge Firecheck
 wallboard

50mm Mineral Wool Insulation
 10-60 Kg/m³

Vapour Barrier



ALL FIXING & ACCESSORIES ARE
 ACCORDING TO STOTHERM CLASSIC
 EXTERNAL WALL INSULATION MECHANICAL
 SYSTEM AS APPROVED BY BBA.

The configuration shown achieves better than
 0.35 W/m²K, calculated according to BRE
 Digest 465. Refer to IS211 for U value and Dew
 point calculation reports.

NOTES

REVISIONS

IMPORTANT: ALL COPYRIGHT AND DESIGN RIGHT,
 SUBSISTING IN THIS DOCUMENT IS THE PROPERTY OF
 SCOTTSDALE CONSTRUCTION SYSTEMS AND ASSOCIATED
 COMPANIES AND MAY NOT BE REPRODUCED WITHOUT
 WRITTEN CONSENT. THIS DOCUMENT AND THE
 INFORMATION CONTAINED WITHIN IT, IS CONFIDENTIAL TO
 SCOTTSDALE CONSTRUCTION SYSTEMS AND ASSOCIATED
 COMPANIES AND MAY NOT BE DISCLOSED TO ANY THIRD
 PARTY WITHOUT WRITTEN CONSENT.

UNLESS OTHERWISE STATED ALL
 DIMENSIONS ARE IN MILLIMETRES

DO NOT SCALE
IF IN DOUBT ASK!

PROJECT NAME 2 Storey Model House Construction Details

CUSTOMER NAME ScottsdaleSteel UK Ltd

DRAWING TITLE Internal To External Wall Junction, STO Rendering System

DRAWING No.
BRE/A21/211

SCALE

NTS

DRAWN BY

Mehdi Mazi

CHECKED BY
Serdar Dundar

STATUS

W4 SRG

DATE

10-05-06

REVISION

ScottsdaleSteel UK Ltd
 500 Chiswick High Road London
 W4 5RG

