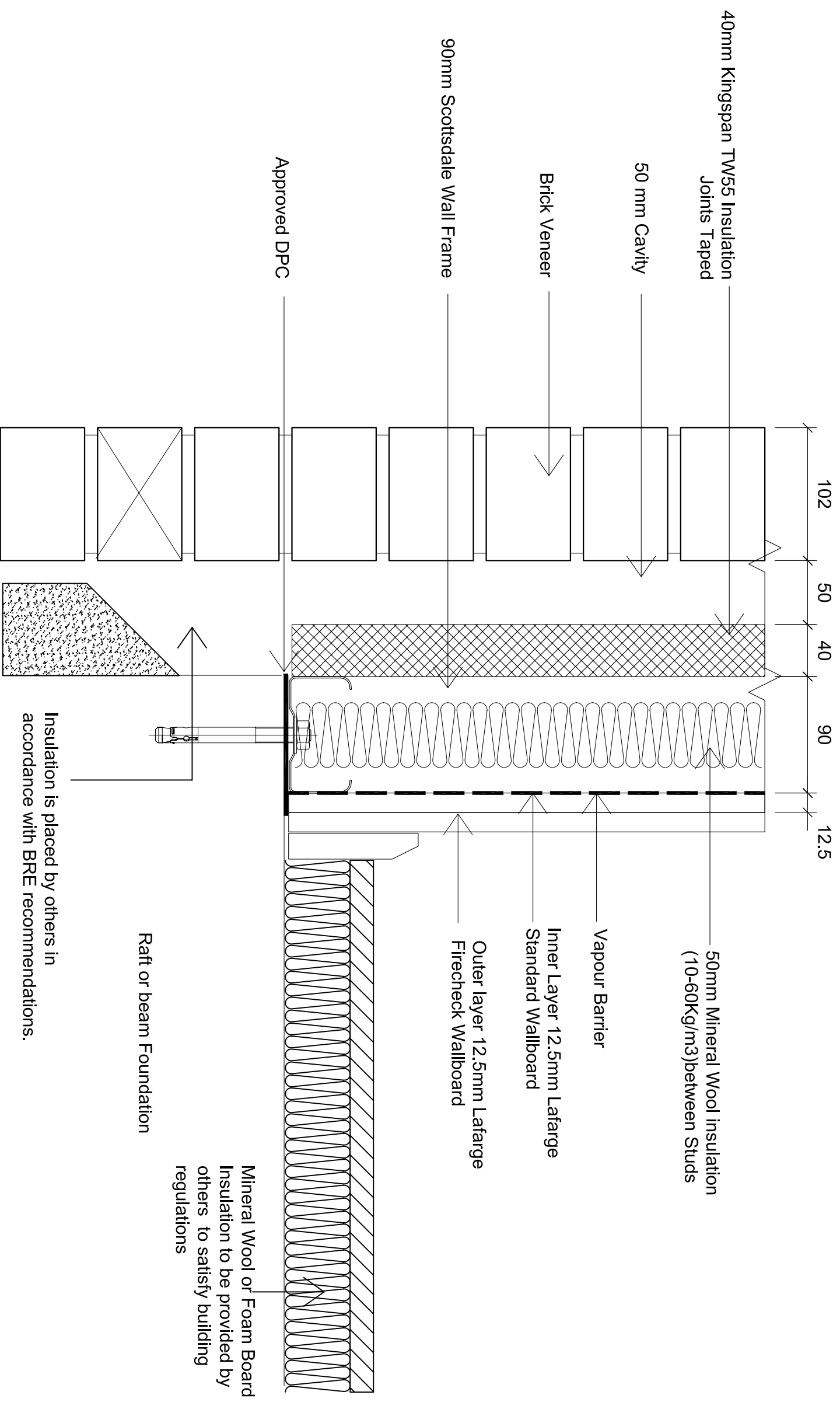


The configuration shown achieves better than 0.35 W/m<sup>2</sup>K, calculated according to BRE Digest 465. Refer to IS410 for U value and Dew point calculation reports.



NOTES

IMPORTANT: ALL COPYRIGHT AND DESIGN RIGHT, SUBSISTING IN THIS DOCUMENT IS THE PROPERTY OF SCOTSDALE CONSTRUCTION SYSTEMS AND ASSOCIATED COMPANIES AND MAY NOT BE REPRODUCED WITHOUT WRITTEN CONSENT. THIS DOCUMENT AND THE INFORMATION CONTAINED WITHIN IT, IS CONFIDENTIAL TO SCOTSDALE CONSTRUCTION SYSTEMS AND ASSOCIATED COMPANIES AND MAY NOT BE DISCLOSED TO ANY THIRD PARTY WITHOUT WRITTEN CONSENT.

REVISIONS

NO.	DESCRIPTION

UNLESS OTHERWISE STATED ALL DIMENSIONS ARE IN MILLIMETRES

DO NOT SCALE  
IF IN DOUBT ASK!

PROJECT NAME 4 Storey Apartment Construction Details  
CUSTOMER NAME Scottsdale Steel UK Ltd  
DRAWING TITLE Wall Section at Base - 90mm stud option  
SCALE N.T.S.  
STATUS

Scottsdale Steel UK Ltd  
500 Chiswick High Road, London W4 5RG

DRAWING No. BRE/A21/405

DATE	DRAWN BY	CHECKED BY	REVISION
03-05-06	Bob Colver	Serdar Dundar	-

