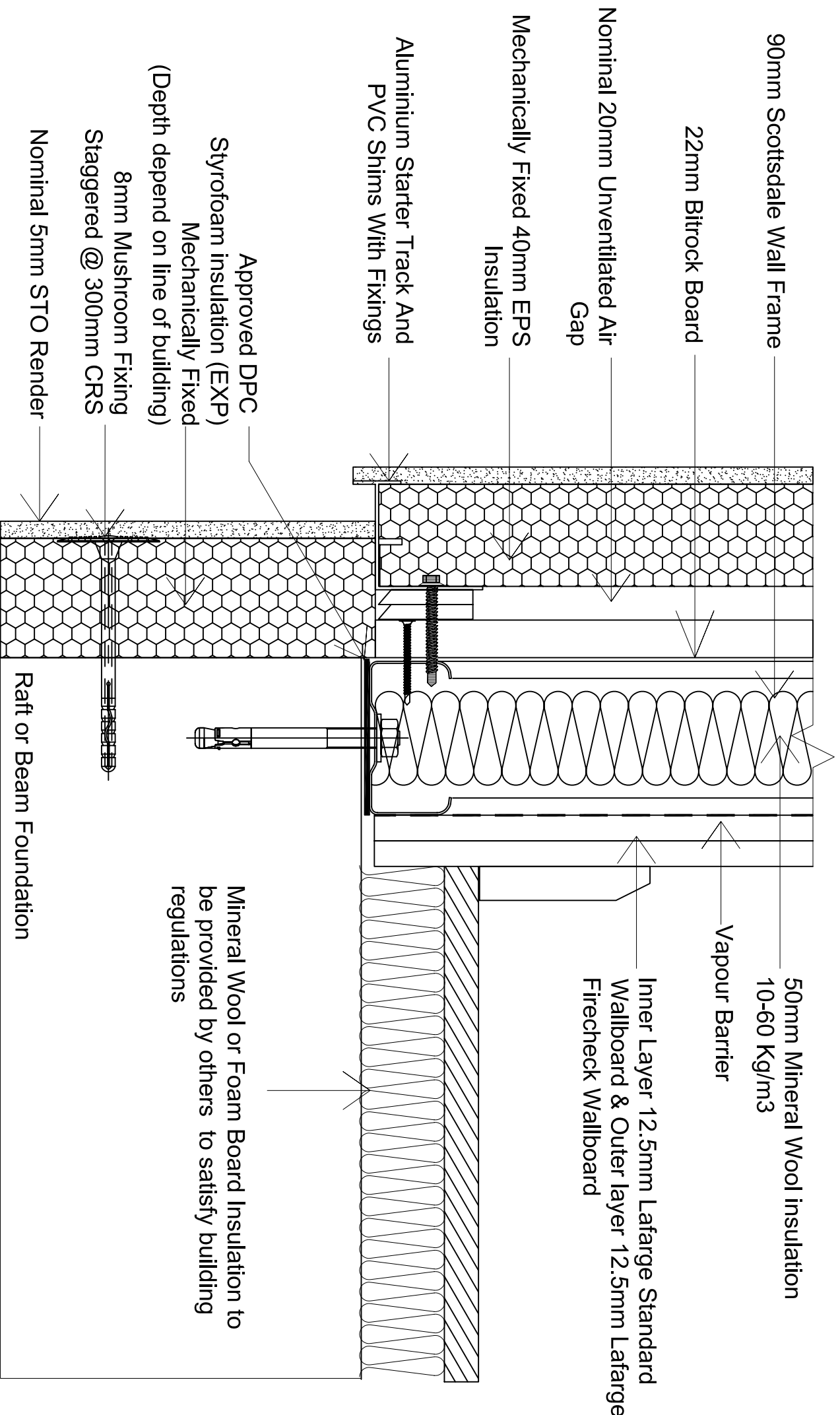




The configuration shown achieves better than 0.35 W/m²K, calculated according to BRE Digest 465. Refer to IS411 for U value and Dew point calculation reports.



ALL FIXING & ACCESSORIES ARE ACCORDING TO STOTHERM CLASSIC EXTERNAL WALL INSULATION MECHANICAL SYSTEM AS APPROVED BY BBA.

If insitu foundations i.e. concrete slab, then insulation is placed in accordance with BRE recommendations.

NOTES

REVISIONS

IMPORTANT: ALL COPYRIGHT AND DESIGN RIGHT, SUBSISTING IN THIS DOCUMENT IS THE PROPERTY OF SCOTTSDALE CONSTRUCTION SYSTEMS AND ASSOCIATED COMPANIES AND MAY NOT BE REPRODUCED WITHOUT WRITTEN CONSENT. THIS DOCUMENT AND THE INFORMATION CONTAINED WITHIN IT, IS CONFIDENTIAL TO SCOTTSDALE CONSTRUCTION SYSTEMS AND ASSOCIATED COMPANIES AND MAY NOT BE DISCLOSED TO ANY THIRD PARTY WITHOUT WRITTEN CONSENT.

UNLESS OTHERWISE STATED ALL DIMENSIONS ARE IN MILLIMETRES

DO NOT SCALE

IF IN DOUBT ASK!

PROJECT NAME 4 Storey Apartment Construction Details

CUSTOMER NAME ScottsdaleSteel UK Ltd

DRAWING TITLE Wall Section at Base, STO Rendering System

DRAWING No. BRE/A21/409

SCALE NTS

DRAWN BY Mehdi Mazl

CHECKED BY Sendar Dundar

STATUS

DATE 03-05-06

REVISION -

ScottsdaleSteel UK Ltd
500 Chiswick High Road London
W4 5RG

