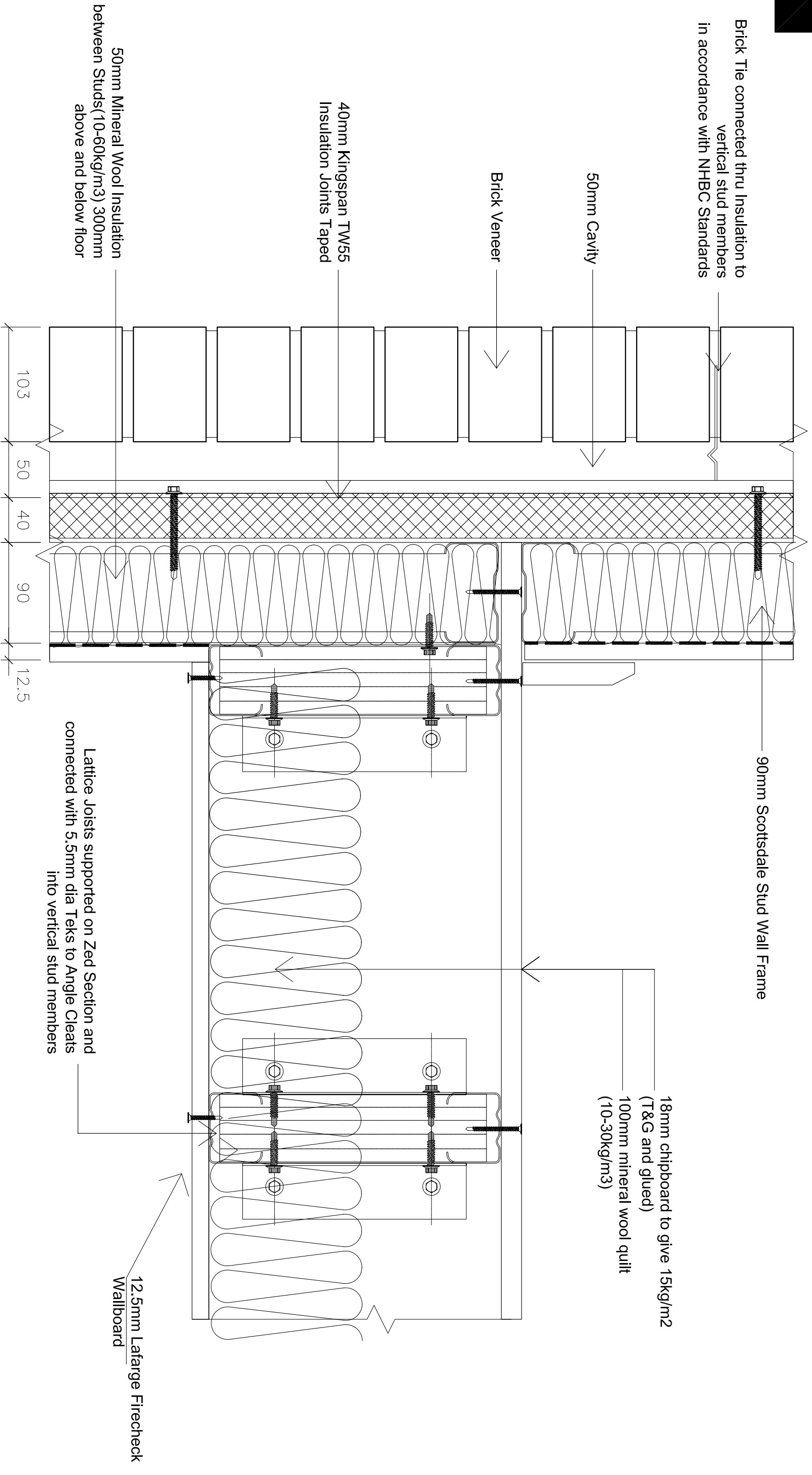


Brick Tie connected thru Insulation to vertical stud members in accordance with NHBC Standards



Lattice Joists supported on Zed Section and connected with 5.5mm dia Tekes to Angle Cleats into vertical stud members

12.5mm Lafarge Firecheck Wallboard

18mm chipboard to give 15kg/m2 (T&G and glued)  
100mm mineral wool quilt (10-30kg/m3)

**NOTES**

IMPORTANT: ALL COPYRIGHT AND DESIGN RIGHT, SUBSISTING IN THIS DOCUMENT IS THE PROPERTY OF SCOTSDALE CONSTRUCTION SYSTEMS AND ASSOCIATED COMPANIES AND MAY NOT BE REPRODUCED WITHOUT WRITTEN CONSENT. THIS DOCUMENT AND THE INFORMATION CONTAINED WITHIN IT, IS CONFIDENTIAL TO SCOTSDALE CONSTRUCTION SYSTEMS AND ASSOCIATED COMPANIES AND MAY NOT BE DISCLOSED TO ANY THIRD PARTY WITHOUT WRITTEN CONSENT.

**REVISIONS**

UNLESS OTHERWISE STATED ALL DIMENSIONS ARE IN MILLIMETRES

**DO NOT SCALE**

**IF IN DOUBT ASK!**

PROJECT NAME 2 Storey Model House Construction Details

CUSTOMER NAME Scottsdale Steel UK Ltd

DRAWING TITLE Internal Floor Parallel to 90mm External Wall - brickwork

SCALE N.T.S.

STATUS

Scottsdale Steel UK Ltd  
600 Chiswick High Road, London W4 5RG

DRAWING No. **BRE/A23/204**

CHECKED BY - Serdar Dundar

REVISION -

DRAWN BY Bob Colver  
10-05-06

**Scottsdale**  
Scottsdale Construction Systems

