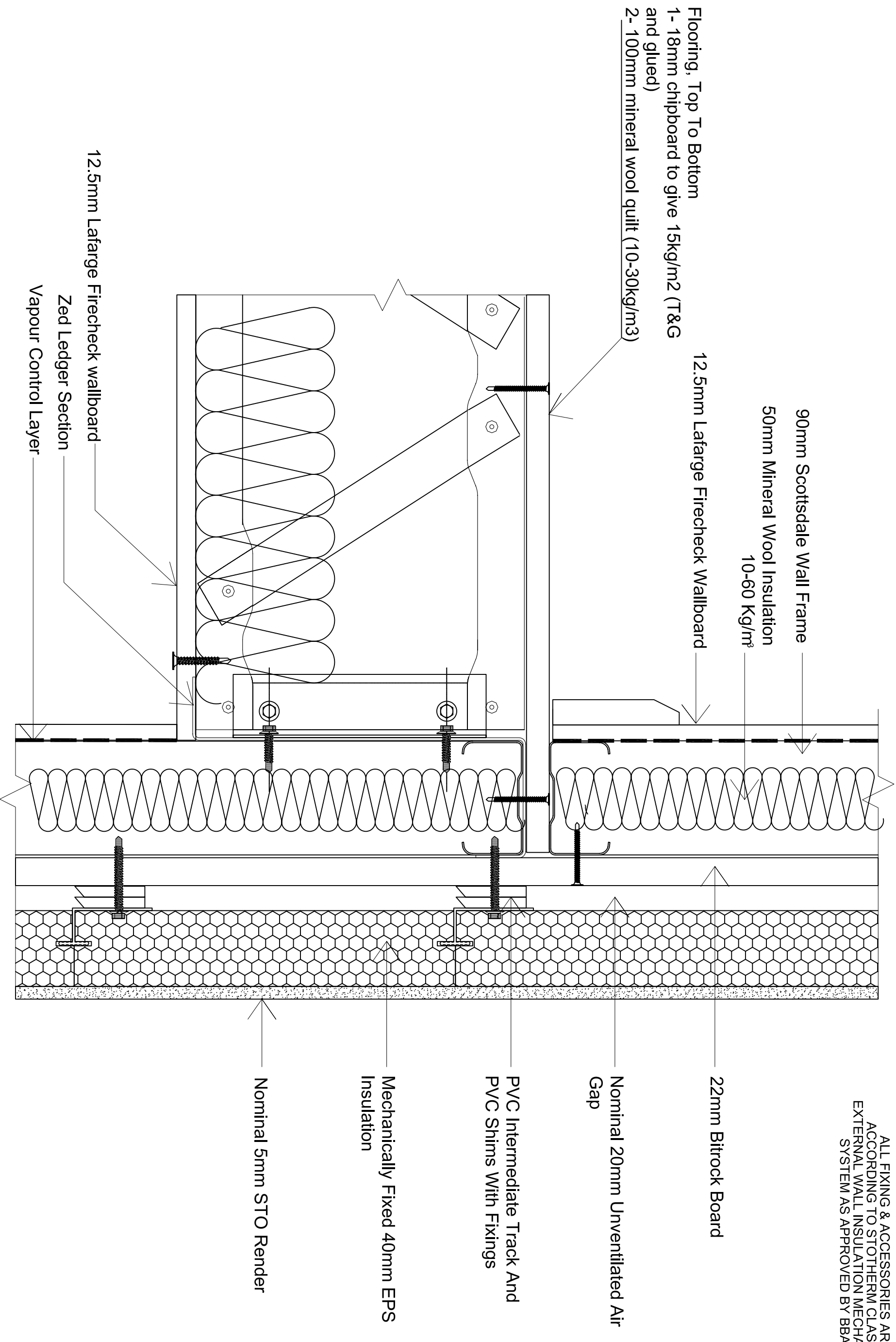




ALL FIXING & ACCESSORIES ARE ACCORDING TO STOTHERM CLASSIC EXTERNAL WALL INSULATION MECHANICAL SYSTEM AS APPROVED BY BBA.



NOTES

IMPORTANT: ALL COPYRIGHT AND DESIGN RIGHT, SUBSISTING IN THIS DOCUMENT IS THE PROPERTY OF SCOTTSDALE CONSTRUCTION SYSTEMS AND ASSOCIATED COMPANIES AND MAY NOT BE REPRODUCED WITHOUT WRITTEN CONSENT. THIS DOCUMENT AND THE INFORMATION CONTAINED WITHIN IT, IS CONFIDENTIAL TO SCOTTSDALE CONSTRUCTION SYSTEMS AND ASSOCIATED COMPANIES AND MAY NOT BE DISCLOSED TO ANY THIRD PARTY WITHOUT WRITTEN CONSENT.

REVISIONS

UNLESS OTHERWISE STATED ALL DIMENSIONS ARE IN MILLIMETRES

**DO NOT SCALE**  
**IF IN DOUBT ASK!**

PROJECT NAME 2 Storey Model House Construction Details

CUSTOMER NAME ScottsdaleSteel UK Ltd

DRAWING TITLE Internal Floor To 90mm External Wall, STO Rendering System

DRAWING No. BRE/A23/205

SCALE NTS

DRAWN BY Mehdi Mazi

CHECKED BY Sendar Dundar

STATUS

DATE 10-05-06

REVISION -

ScottsdaleSteel UK Ltd  
500 Chiswick High Road London  
W4 5RG

