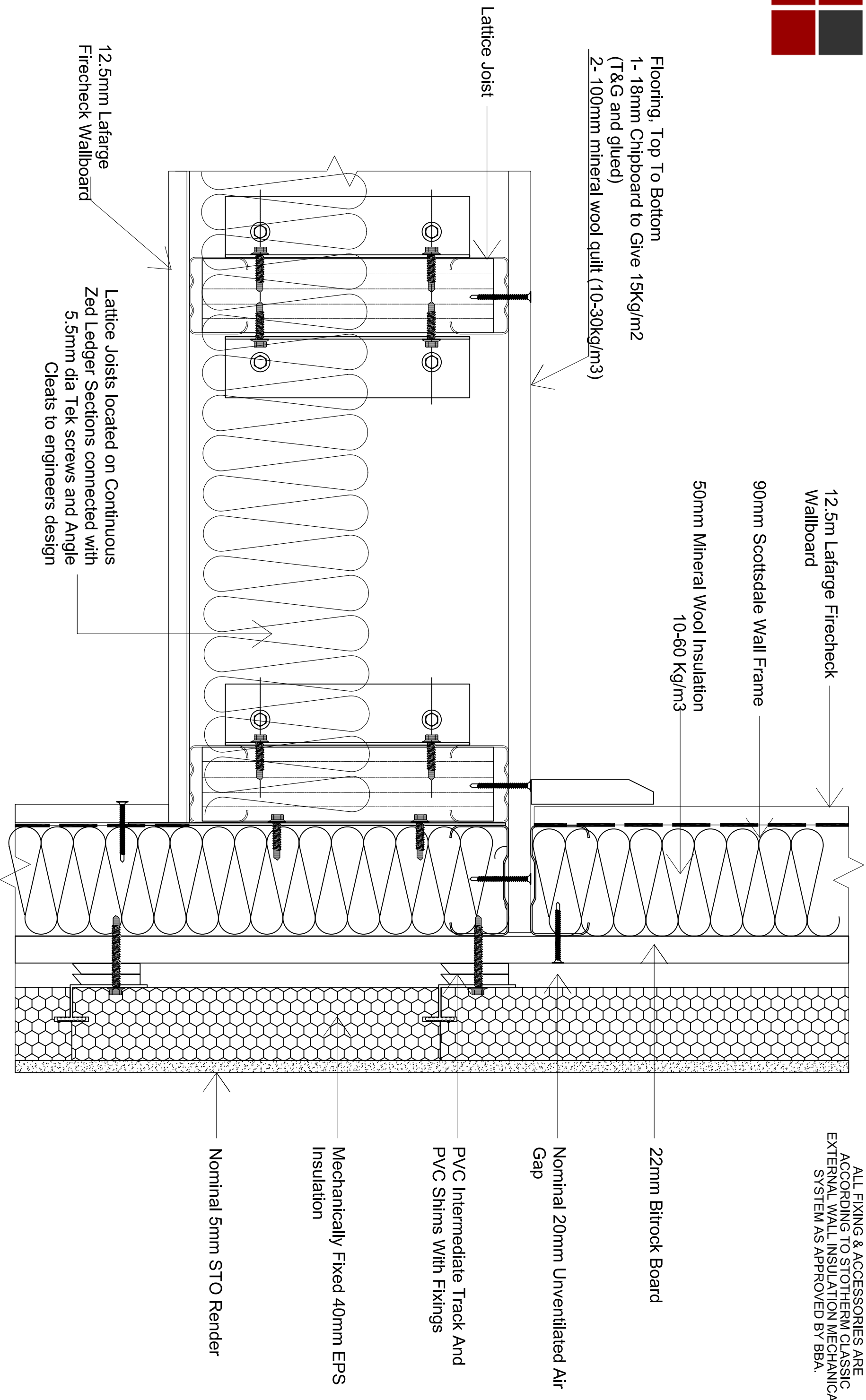




ALL FIXING & ACCESSORIES ARE ACCORDING TO STOTHERM CLASSIC EXTERNAL WALL INSULATION MECHANICAL SYSTEM AS APPROVED BY BBA.



NOTES

IMPORTANT: ALL COPYRIGHT AND DESIGN RIGHT, SUBSISTING IN THIS DOCUMENT IS THE PROPERTY OF SCOTSDALE CONSTRUCTION SYSTEMS AND ASSOCIATED COMPANIES AND MAY NOT BE REPRODUCED WITHOUT WRITTEN CONSENT. THIS DOCUMENT AND THE INFORMATION CONTAINED WITHIN IT, IS CONFIDENTIAL TO SCOTSDALE CONSTRUCTION SYSTEMS AND ASSOCIATED COMPANIES AND MAY NOT BE DISCLOSED TO ANY THIRD PARTY WITHOUT WRITTEN CONSENT.

REVISIONS

UNLESS OTHERWISE STATED ALL DIMENSIONS ARE IN MILLIMETRES

Lattice Joists located on Continuous Zed Ledger Sections connected with 5.5mm dia Tek screws and Angle Cleats to engineers design

DO NOT SCALE

IF IN DOUBT ASK!

PROJECT NAME 2 Storey Model House Construction Details

CUSTOMER NAME ScottsdaleSteel UK Ltd

DRAWING No. BRE/A23/206

DRAWING TITLE Internal Floor Parallel to 90mm External Wall - STO Rendering System

SCALE NTS

DRAWN BY Mehdi Mazzi

STATUS

DATE 10-05-06

CHECKED BY Sendar Dundar

ScottsdaleSteel UK Ltd  
500 Chiswick High Road London  
W4 5RG

