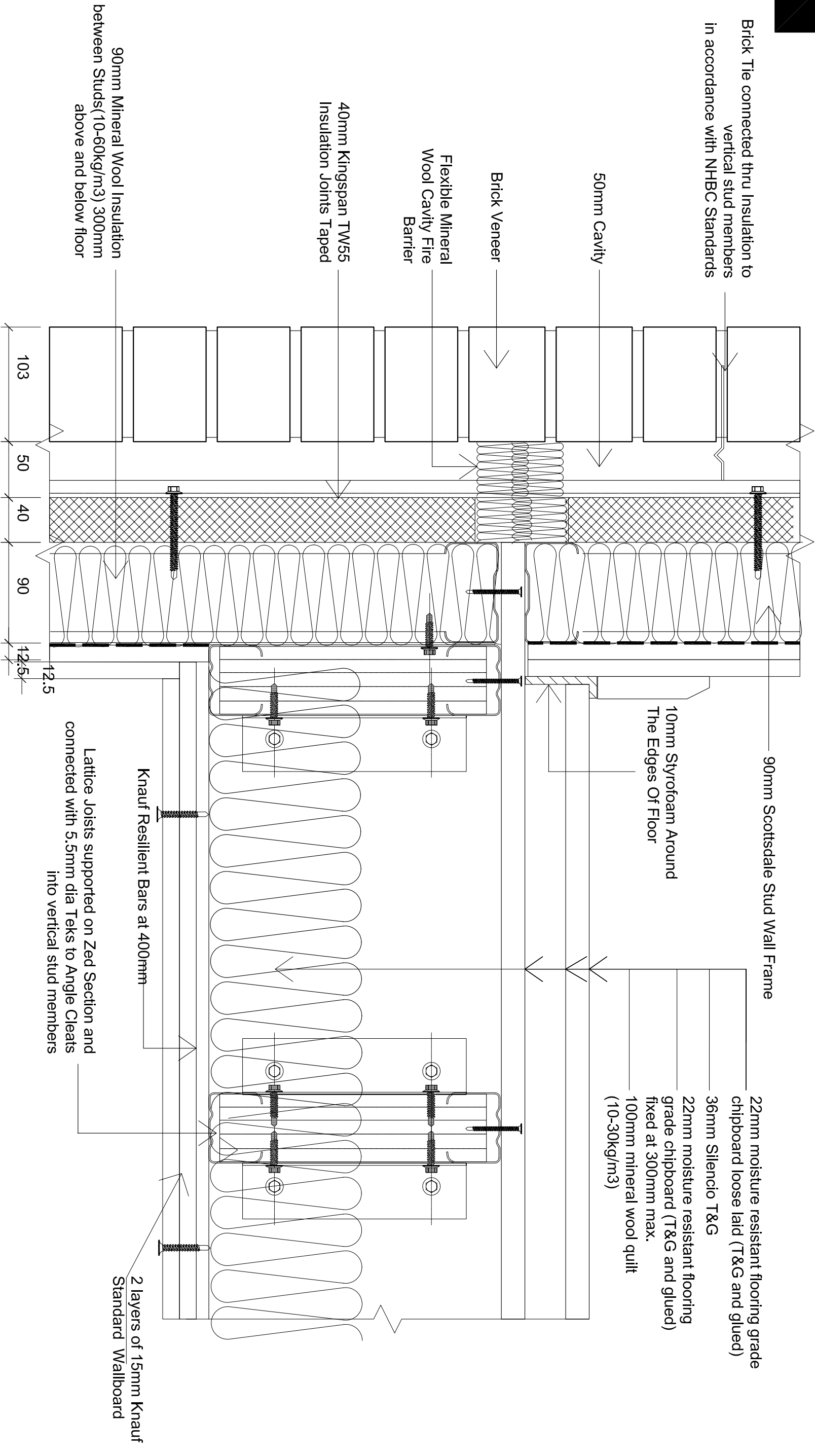


Brick Tie connected thru Insulation to vertical stud members in accordance with NHBC Standards



90mm Mineral Wool Insulation between Studs(10-60kg/m3) 300mm above and below floor

40mm Kingspan TW55 Insulation Joints Taped

Flexible Mineral Wool Cavity Fire Barrier

Brick Veneer

50mm Cavity

90mm Scottsdale Stud Wall Frame

10mm Styrofoam Around The Edges Of Floor

22mm moisture resistant flooring grade chipboard loose laid (T&G and glued)
36mm Silencio T&G
22mm moisture resistant flooring grade chipboard (T&G and glued) fixed at 300mm max.
100mm mineral wool quilt (10-30kg/m3)

Knauf Resilient Bars at 400mm

Lattice Joists supported on Zed Section and connected with 5.5mm dia Tekes to Angle Cleats into vertical stud members

2 layers of 15mm Knauf Standard Wallboard

NOTES

IMPORTANT: ALL COPYRIGHT AND DESIGN RIGHT, SUBSISTING IN THIS DOCUMENT IS THE PROPERTY OF SCOTSDALE CONSTRUCTION SYSTEMS AND ASSOCIATED COMPANIES AND MAY NOT BE REPRODUCED WITHOUT WRITTEN CONSENT. THIS DOCUMENT AND THE INFORMATION CONTAINED WITHIN IT, IS CONFIDENTIAL TO SCOTSDALE CONSTRUCTION SYSTEMS AND ASSOCIATED COMPANIES AND MAY NOT BE DISCLOSED TO ANY THIRD PARTY WITHOUT WRITTEN CONSENT.

REVISIONS

UNLESS OTHERWISE STATED ALL DIMENSIONS ARE IN MILLIMETRES

DO NOT SCALE

IF IN DOUBT ASK!

PROJECT NAME 4 Storey Apartment Construction Details

CUSTOMER NAME Scottsdale Steel UK Ltd

DRAWING TITLE Compartment Floor parallel to 90mm external wall - brickwork

SCALE N.T.S.

STATUS

Scottsdale Steel UK Ltd
600 Chiswick High Road, London W4 5RG

DRAWING No. BRE/A23/404

CHECKED BY - Serdar Dunder

REVISION A

Scottsdale Construction Systems

